

APPENDIX 2. PROGRAMME OF WORK TOWARDS A GOLD STANDARD INTEGRATED NEEDS ASSESSMENT.

HEREFORDSHIRE PUBLIC SERVICES LEADERSHIP TEAM

15TH MAY 2012

Introduction

National Policy has increasingly recognised the importance of “needs assessments” as the evidence base to underpin strategy development and commissioning decisions. This has been translated into the importance of Joint Strategic Needs Assessments (JSNA) within strategic commissioning and the work of Health and Wellbeing Boards.

To become an exemplar commissioning organisation that improves the health and wellbeing of its residents, Herefordshire Public Services requires high quality needs assessments embedded within the commissioning, performance and planning cycles.

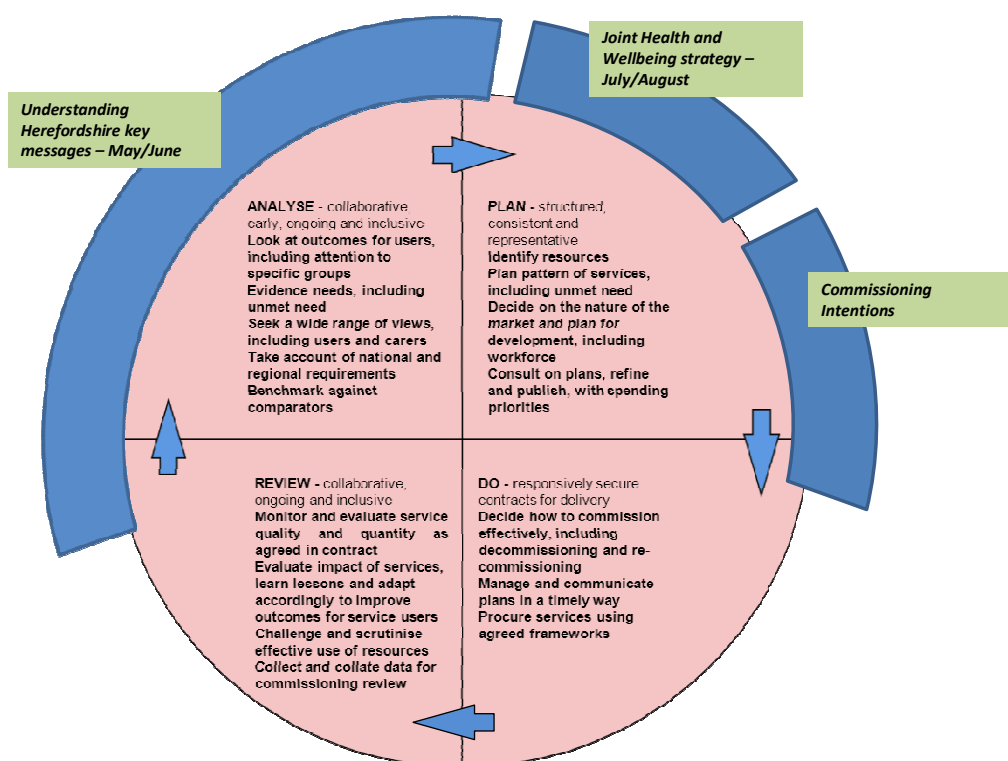


Figure 1. The INA and the commissioning cycle.

The Integrated Needs Assessment Project

The development of an improved JSNA into a “gold standard” integrated assessment of need (INA) began across HPS in June 2011. It was subsequently supported by draft guidance from the Department of Health laying out a framework for the development of JSNAs.

The aim is to provide robust and timely intelligence that:

- Enables evidence-based decision making and strategy development
- Focuses on the need to identify priorities for service improvement and design
- Identifies vulnerable groups that may require targeted services
- Enables the outcomes of commissioning decisions and service developments to be evaluated

The programme of work is being undertaken by the INA steering group, supported by a wider reference group, both of which are drawn from across HPS. Initially implemented under Rising to the Challenge, subsequent governance arrangements are outlined in Figure 2.

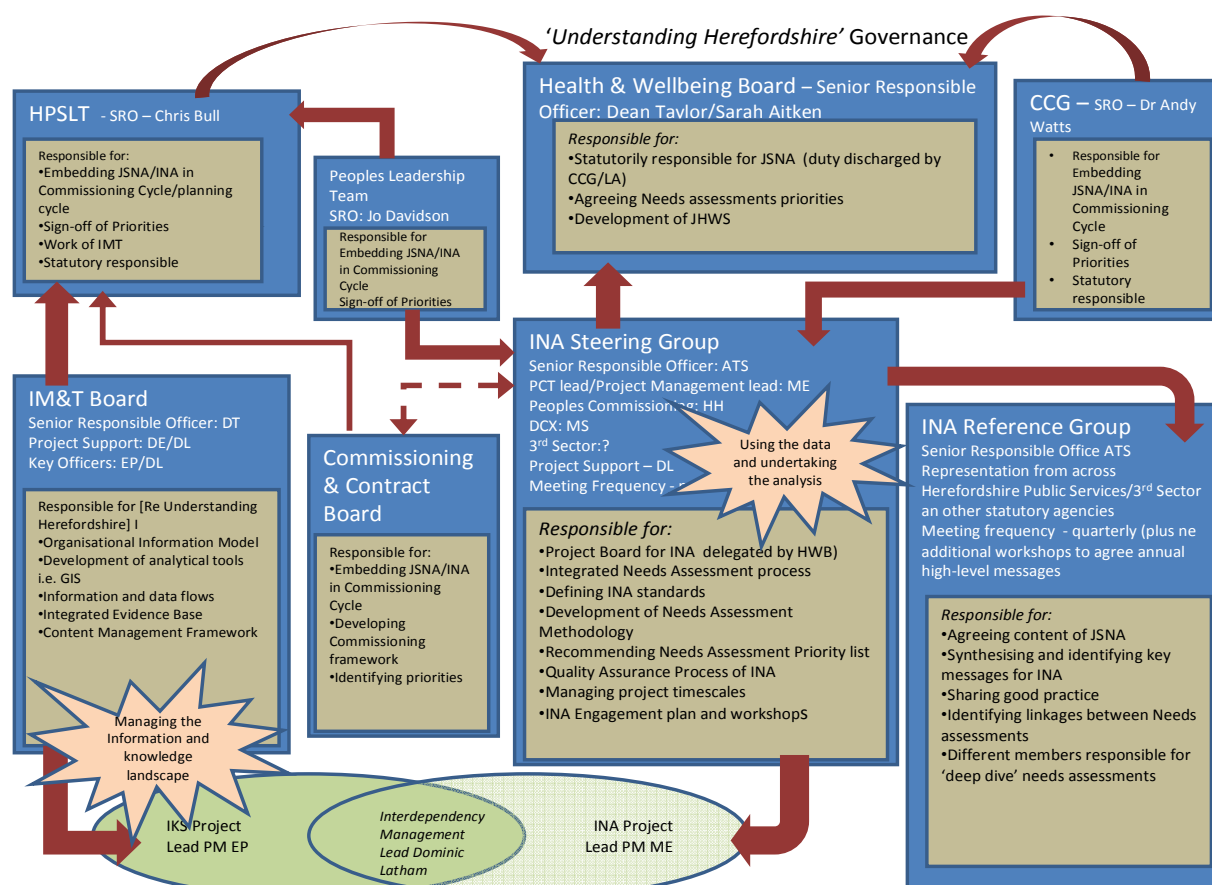


Figure 2. The INA Development Project – Governance Arrangements

Work to Date

As of May 2012 the following milestones have been achieved:

1. Agreement of the overall structure of the INA, as an overarching summary assessment of health and wellbeing needs supported by more in-depth analysis and “deep dive” needs assessments for particular areas.
2. An agreed “standard methodology” for undertaking these in depth analysis/needs assessments across HPS.
3. Engagement of a wider INA reference group from across HPS and their ownership of:
 - The content and structure of the underpinning web-based resource known as the Integrated Evidence Base
 - The content of the Understanding Herefordshire summary document.
4. A planned programme of analysis for bronze (2012), silver (2013) and gold (2014) INAs.

Planned Programme of Analysis

A planned programme of analysis has been identified by the INA steering group – this is kept under regular review with regard to both progress and the need to develop new areas or respond to national or local issues. Key areas are identified within Tables 1, 2 and 3.

Table 1. Bronze INA (2012)

Objective	Deliverable	Progress
Embedding within commissioning cycle	Time of publication brought forward to May/June	Completed
Robust structure	Overarching summary document bringing together JSNA and State of Herefordshire Report. Underpinned by dynamic web-based integrated evidence base	Completed
Asset based approach	Identification of assets across both communities and services, and of opportunities to build upon them	Completed
Incorporate analysis from HPS and partners across breadth of determinants of health and wellbeing	Include analyses on infrastructure, economics, housing etc as well as demographics, lifestyle factors and health and wellbeing outcomes	Completed
Ability to undertake analysis by place/locality	Sub-county analysis by various measures of geography e.g. locality assessments, GP practice profiles	Completed
Greater use of qualitative information to understand access issues, user experiences and needs of marginalised groups	Engagement of the third sector	Commenced with Dementia, ongoing programme of engagement,
Prioritised programme of in-depth analysis/needs assessments	In-depth needs assessments for falls, dementia, alcohol harm reduction, substance misuse services and childhood obesity	Completed
Understanding effects of economic downturn on need for services	Embedded within existing analysis	Commenced – for development as part of silver
Understand effects of demographic change on predicted need for Health and Social care	Modelling effects of demographic change	Commenced – for development as part of silver
Clear recommendations identifying priority areas for action across HPS and its partners	Clear recommendations within summary document	Completed

Table 2. Silver INA (2013)

Objective	Deliverable	Progress
Outcome focused summary document	Structure summary document around “Marmot” indicators framework	July 2012 inwards
Improved access and ease of navigation for web-based Integrated Evidence Base resource	New web-site as part of transfer to new platform, “road tested” on commissioners and partners	July 2012 onwards, scoping user requirements commenced
Ongoing development of use of qualitative information	Programme of engagement with third sector	Focus on families in September 2012
Develop economic aspects	Engage stakeholders relating to development of economy and skills	July 2012 onwards
Understanding effects of economic downturn on need for services	Analysis on poverty (include fuel poverty) in Herefordshire; investigate impact of welfare reforms and gather evidence on financial exclusion	Commenced (analysis on poverty done) for development as part of silver
Understand effects of demographic change on predicted need for Health and Social care	Modelling effects of demographic change	Commenced – for development as part of silver
Evaluate performance against NHS, Local Authority and Public Health Outcomes Frameworks	Understand synergies and opportunities for partnership working	Commenced – for development as part of silver
Develop content in Cancer and Cancer related information in line with NCAT guidance	Dedicated web-page containing or linking to relevant resources to provide comprehensive assessment of need	Commenced – for development as part of silver
Make more extensive use of existing intelligence resources	Thematic reports from the health & well-being survey (‘deep dives’). Publication of the healthy housing survey report & further analysis by locality	Further analytical support may need to be commissioned.
Identification of priority areas for in depth analysis	Planned programme of in-depth analysis and needs assessment	To be identified on the basis of evidence up to May 2012

Table 3. Gold INA (2014)

Objective	Deliverable	Progress
Full interactive web-based resource accessible to analysts and public alike	Ability to “dice and slice” content by both person, theme and place	
A comprehensive INA that meets the requirements of HPS and all it’s partners	Further areas of analysis to complete the INA identified by “sense-checking” silver INA with HPS and its partners	
Positive reputation with stakeholders	Further engagement/promotion of INA process and findings	
INA embedded with annual commissioning cycle	Integrated within work of HPS and its partners	
Herefordshire held as an exemplar across the country	Presentations locally/regionally and publication of work around best practice	